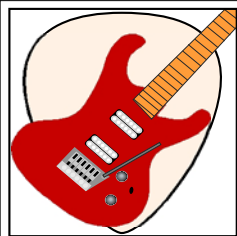




Reading guitar music

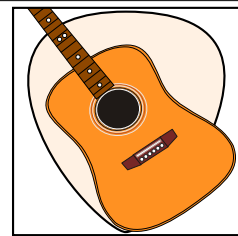
Lesson 5 & homework





Lesson five

Dotted notes



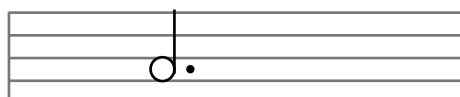
A dot after a note increases its value by half

a dotted semibreve



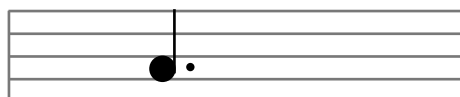
6 beats

a dotted minim



3 beats

a dotted crotchet



1 1/2 beats

a dotted quaver

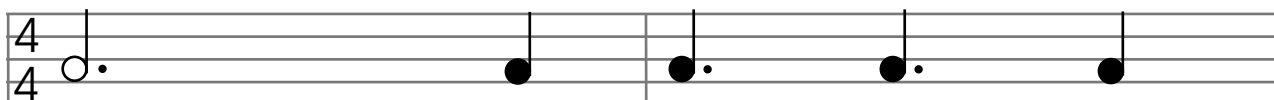


3/4 beat

The same rule applies to rests. So any rest with a dot increases its value by half.

examples

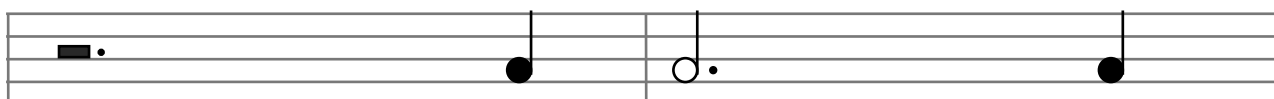
1 . . . 2 . . . 3 . . . 4 . . . 1 . . . 2 . . . 3 . . . 4 . . .



1 . . . 2 . . . 3 . . . 4 . . . 1 . . . 2 . . . 3 . . . 4 . . .



1 . . . 2 . . . 3 . . . 4 . . . 1 . . . 2 . . . 3 . . . 4 . . .



exercise 1

G C D C

T
A
B

D C D C

T
A
B

Em Am Em Am

T
A
B

Em Am D G

T
A
B

Down in the Valley (easy version)

Note

This tune is in 3/4 time, which means the bars have 3 beats. So you count this piece 1 . 2 . 3 . 1 . 2 . 3 . 1 . 2 . 3 .

You will also notice dotted minims and dotted minim rests, which are worth 3 beats (an entire bar), and tied dotted minims which are worth 6 beats

<p>The first system of musical notation for 'Down in the Valley' in 3/4 time. It consists of four measures. The first measure contains three quarter notes: G4, A4, and B4. The second measure contains a dotted half note G4. The third measure contains a dotted half note G4. The fourth measure contains a dotted half note G4. The treble clef and 3/4 time signature are shown at the beginning.</p>
<p>T 0 1 3 0 1</p>
<p>A 0</p>
<p>B</p>

<p>The second system of musical notation. The first measure contains three quarter notes: G4, A4, and B4. The second measure contains a dotted half note G4. The third measure contains a dotted half note G4. The fourth measure contains a dotted half note G4. A slur is placed over the dotted half notes in the second and third measures. The treble clef and 3/4 time signature are shown at the beginning.</p>
<p>T 0 3 1 3 (3)</p>
<p>A</p>
<p>B</p>

<p>The third system of musical notation. The first measure contains three quarter notes: G4, A4, and B4. The second measure contains a dotted half note G4. The third measure contains a dotted half note G4. The fourth measure contains a dotted half note G4. The treble clef and 3/4 time signature are shown at the beginning.</p>
<p>T 0 0 3 1 3</p>
<p>A 0</p>
<p>B</p>

<p>The fourth system of musical notation. The first measure contains three quarter notes: G4, A4, and B4. The second measure contains a dotted half note G4. The third measure contains a dotted half note G4. The fourth measure contains a dotted half note G4. A slur is placed over the dotted half notes in the second and third measures. The treble clef and 3/4 time signature are shown at the beginning.</p>
<p>T 1 0 3 1 (1)</p>
<p>A</p>
<p>B</p>

3/4

T 0 1 3 0 1

A

B

T 0 3 1 3 (3)

A

B

T 0 0 3 3 3

A

B

T 1 0 3 1 (1)

A

B

Down in the Valley (harder version)

Note

This tune is in 3/4 time, which means the bars have 3 beats. So you count this piece 1 . 2 . 3 . 1 . 2 . 3 . 1 . 2 . 3 .

You will also notice dotted minims and dotted minim rests, which are worth 3 beats (an entire bar), and tied dotted minims which are worth 6 beats

T	0	1	3
A	0		
B			

T	0	3	1
A			
B	3	2	0

T	0	0	3
A	0		
B			

T	1	0	3
A			
B	3	0	2

3/4

T 0 1 3 0 1

A 0

B

T 0 3 1 3 (3)

A 3 2 0

B 3 (3)

T 0 0 3 3 3

A 0

B 3

T 1 0 3 1 (1)

A 3 0 2 3 (3)

B 3

Ghost riders in the sky, Duane Eddy

Intro

The Intro section consists of three measures of music in 4/4 time. The melody is written on a treble clef staff with a key signature of one flat (B-flat). The notes are: G2 (quarter), A2 (quarter), Bb2 (quarter), A2 (quarter), G2 (quarter), F2 (quarter), G2 (quarter), A2 (quarter), Bb2 (quarter), A2 (quarter), G2 (quarter), F2 (quarter), G2 (quarter), A2 (quarter), Bb2 (quarter), A2 (quarter), G2 (quarter). Red arrows indicate the fretting hand movements: down for G, A, Bb, A, G, F, G, A, Bb, A, G, F, G, A, Bb, A, G.

T																	
A																	
B	0	3	2	0	3	2	0	3	2	0	3	2	0	3	2	0	3

Verse

The first part of the Verse section consists of three measures. The first measure has a whole rest. The second measure has a half note G2. The third measure has a quarter note G2, quarter note A2, quarter note Bb2, quarter note A2, quarter note G2, quarter note F2, quarter note G2, quarter note A2, quarter note Bb2, quarter note A2, quarter note G2. Red arrows indicate fretting hand movements: down for G, A, Bb, A, G, F, G, A, Bb, A, G.

T																	
A																	
B	0	0	0	0	2	3	3	3	0	3	3	3	0	3			

The second part of the Verse section consists of three measures. The first measure has a whole rest. The second measure has a half note G2. The third measure has a quarter note G2, quarter note A2, quarter note Bb2, quarter note A2, quarter note G2, quarter note F2, quarter note G2, quarter note A2, quarter note Bb2, quarter note A2, quarter note G2. Red arrows indicate fretting hand movements: down for G, A, Bb, A, G, F, G, A, Bb, A, G.

T																	
A																	
B	0	0	0	0	2	3	3	3	0	2	2	2	3	2			

The third part of the Verse section consists of three measures. The first measure has a whole rest. The second measure has a half note G2. The third measure has a quarter note G2, quarter note A2, quarter note Bb2, quarter note A2, quarter note G2, quarter note F2, quarter note G2, quarter note A2, quarter note Bb2, quarter note A2, quarter note G2. Red arrows indicate fretting hand movements: down for G, A, Bb, A, G, F, G, A, Bb, A, G.

T																	
A																	
B	2	2	2	2	2	2	2	2	2	2	2	2	2	2	2	3	0

T		
A		
B	1 1 1 1 3 3	0 3 0 0 3 0

Chorus

T	0 0 0 3	
A	1 1 1 5	
B		

T	5 5 5 5 0		
A	5 5 5 5 1		
B		0	1 1 1

T	
A	
B	3 3 0

Arrangement verse - chorus - verse - chorus - verse - chorus - chorus

Yesterday, The Beatles (alternative rhythm)

Verse

Chords: F, A7, Dm, Bb, C

T: 1 1 1 5 5 5 5 5 5 5 5 5 1 1 3 3

A: 2 2 2 6 6 6 7 7 7 3 3 3 3 3 5 5

B: 3 3 3 5 5 5 7 7 7 5 5 5 1 1 3 3

Chords: F, Dm, G7, Bb, F

T: 1 1 1 5 5 3 3 1 1 1

A: 2 2 2 7 7 4 4 3 3 2

B: 3 3 3 5 5 3 3 1 1 3

Chorus

Chords: A7, Dm, Gm, C, F

T: 5 5 5 5 5 3 3 1

A: 6 6 6 7 7 7 3 2

B: 7 7 7 5 5 5 3 3

Coda

Chords: F, G7, Bb, F

T: 1 3 1 1

A: 2 4 3 2

B: 3 3 1 3

Arrangement verse - verse - chorus - verse - coda

Yesterday - chords

Underlined chords are 'A' string rooted or second position chords

Diagram showing fretboard positions for chords:

- F**: Fret 1, notes 1-2-3-4 on strings 1-4.
- A7**: Fret 5, notes 1-2-3 on strings 1-3.
- Dm**: Fret 5, notes 1-2-3-4 on strings 1-4.
- Bb**: Fret 1, notes 1-2-3-4 on strings 1-4.
- C**: Fret 3, notes 1-2-3-4 on strings 1-4.
- G7**: Fret 3, notes 1-2-3 on strings 1-3.
- Gm**: Fret 3, notes 1-2-3-4 on strings 1-4.

If you don't yet know barre chords go through the barre chord lessons first

'E' string rooted - 1st position

Diagram showing fretboard positions for chords rooted on the 'E' string (1st position):

- major**: notes 1-2-3-4 on strings 1-4.
- minor**: notes 1-3-4 on strings 1-3.
- 7th**: notes 1-2-3 on strings 1-3.
- minor 7th**: notes 1-3 on strings 1-2.

'A' string rooted - 2nd position

Diagram showing fretboard positions for chords rooted on the 'A' string (2nd position):

- major**: notes 1-2-3-4 on strings 1-4, with an 'X' on the 1st string.
- minor**: notes 1-2-3-4 on strings 1-4, with an 'X' on the 1st string.
- 7th**: notes 1-2-3-4 on strings 1-4, with an 'X' on the 1st string.
- minor 7th**: notes 1-2-3 on strings 1-3, with an 'X' on the 1st string.

note map for the bottom two strings

Note map for the bottom two strings (A and E strings):

	E	D	C	Bb	A
	C	B	A	G	F
8	7	6	5	4	3
				2	1

